

AQUASOL HS3

SBQ-Type Water Resistant Emulsion for Thick Print

Features

- One Pot type emulsion for thick E.O.M. printing.
- Higher printing durability than conventional emulsion.
- High solid contents for easy coating of thicker and flat surface.
- High sensitivity with short exposure time and achieve efficient productivity.

Applications

- Water based ink applications such as textiles ,flags and so on.
- Plastisol ink applications under circumstance mineral spirits, kerosene, turpentine oil or orange oil is used as ink cleaner.

Specification

- Viscosity: Approx. 33,000 mPa·s(25°C)
- Solid contents: Approx. 49%
- Packaging Standards: 1kg, 5kgs
- ※Contact us for custom packaging.

Coating Process & Exposure Data

Screen mesh, Color	E.O.M. (μ m) Coating Procedure	Metal Halide Lamp* LED 405nm**
Polyester 27mesh/cm – 710 White <u>Dull edge coater</u>	200 μ m Print side 2 / Squeegee side 5	30~40 sec 30~40 sec
Polyester 31mesh/cm – 540 White <u>Dull edge coater</u>	200 μ m Print side 2 / Squeegee side 5	30~40 sec 30~40 sec
	400 μ m Print side 2 / Squeegee side 10	60~85 sec 110~130 sec
Polyester 31mesh/cm – 1000 White <u>Dull edge coater</u>	140 μ m Print side 2 / Squeegee side 4	30~40 sec 30~40 sec
	340 μ m Print side 2 / Squeegee side 9	60~85 sec 110~130 sec

The above is for guideline purposes only.

Take a step test to find the optimum exposure time.

*3kW Metal Halide Lamp 10 mW/cm²

**M&R STARLIGHT™ 10 mW/cm²



MURAKAMI CO., LTD.

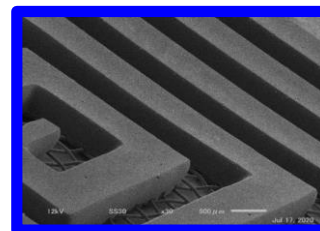
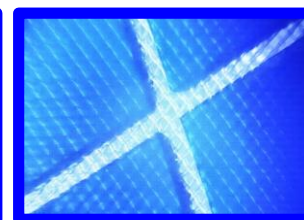
◆ 5-3-10 Yokokawa, Sumida-ku, Tokyo Japan
URL <https://www.murakami.co.jp/english/>

Instructions

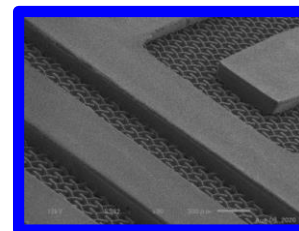
- Wash, degrease and dry screen mesh. Remove grease and foreign contaminants with MSP cleanser.
- Coat emulsion slowly in order to prevent air bubbles.
- Dry coated screen completely before exposure. Drying temperature @ +40°C.

【Remarks】

- Keep the emulsion in a cool and UV light safe area.
- Recommended to filter remaining emulsion with screen mesh before pouring it back into the container to remove any dust, foreign substances and air bubbles.
- Do not use normal solvent (ex. Toluene, acetone, ethyl acetate) as ink cleaner.



Metal Halide Lamp
E.O.M.: 400 μ m



DLE
E.O.M.: 300 μ m